



RUSTICATION

Our rustications and chamfers produce the cleanest and sharpest finishes in the industry.

Victory Bear is a leader in innovative products for the precast and tilt-up industries. Our products provide flexibility to designers, allowing for a variety of design configurations in a variety of building types.

FEATURES & BENEFITS

Flex-Edge Seal

Victory Bear's Flex-Edge technology seals tightly against the casting surface, preventing concrete seepage while creating sharp, crisp lines.

Labor Savings

PVC provides a superior finish to wood. It releases cleanly from the concrete, and leaves no residue. The end result is a superior finish that leaves little to no finish work after the panels are lifted.



Wide Variety

Whether you're using fasteners, glue, or adhesive tape, Victory Bear has a variety of rustication styles and sizes for your next tilt-up or precast project!

Standard Series Rustication

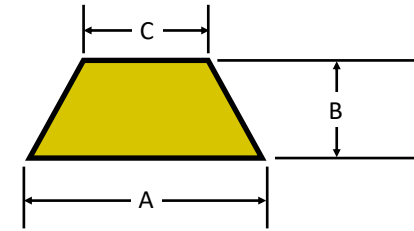
Part Number	Part Name	Width "A"	Height "B"	Width "C"	Chamfer Angle	Pieces Per Box	Ft. Per Box	Soft PVC Seal?
800	2.0 Rustication	2"	0.5"	1"	45°	24	192	NO
715	2.0 Rustication	2"	0.75"	1"	56°	18	144	YES
729	2.0 Rustication (Low Profile)	2"	0.5"	1.375"	60°	22	176	NO
743	2.25 Rustication	2.25"	0.75"	0.75"	45°	48	384	NO
712	2.5 Rustication	2.5"	0.75"	0.9375"	45°	12	96	NO
730	3.0 Rustication (Low Profile)	3"	0.5"	2.375"	60°	32	256	NO
713	3.5 Rustication	3.5"	0.75"	2"	45°	20	160	NO
723	4.0 Rustication	4"	0.75"	2.5"	45°	20	160	YES
714	5.5 Rustication	5.5"	0.75"	4"	45°	14	112	NO
747	8.0 Rustication	8"	0.75"	6.5"	45°	8	64	NO
876	Base Clip	N/A	N/A	N/A	N/A	60	480	N/A

One-Piece Series Rustication

Part Number	Part Name	Width "A"	Height "B"	Width "C"	Chamfer Angle	Pieces Per Box	Ft. Per Box	Soft PVC Seal?
885	1 x ½ V-Groove Rustication	1"	0.5"	0"	45°	64	512	YES
902	1 x ¾ Architectural Rust (Tape)	1"	0.75"	0.75"	80°	24	288	YES
878	¾ x ¾ Architectural Rust (Tape)	0.75"	0.75"	0.5"	81°	32	384	YES
879	1 x 1 Architectural Rust (Tape)	1"	1"	0.75"	83°	18	216	YES
721	2 x ½ One-Piece Rustication	2"	0.5"	1"	45°	50	400	YES
321	2 x ½ One-Piece Rust (Tape)	2"	0.5"	1"	45°	50	400	YES
709	2 x ¾ One-Piece Rustication	2"	0.75"	0.5"	45°	42	336	YES
309	2 x ¾ One-Piece Rust (Tape)	2"	0.75"	0.5"	45°	42	336	YES
705	2.25 One-Piece Rustication	2.25"	0.75"	0.75"	45°	35	280	YES
305	2.25 One-Piece Rust (Tape)	2.25"	0.75"	0.75"	45°	12	96	YES
724	3 x ¾ One-Piece Rustication	3"	0.75"	1.5"	45°	26	208	YES
324	3 x ¾ One-Piece Rust (Tape)	3"	0.75"	1.5"	45°	26	208	YES
708	3.5 One-Piece Rustication	3.5"	0.75"	2"	45°	18	144	YES
308	3.5 One-Piece Rust (Tape)	3.5"	0.75"	2"	45°	18	144	YES

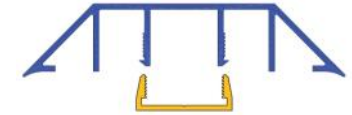
Snap Series Rust

Part Number	Part Name	Width "A"	Height "B"	Width "C"	Chamfer Angle	Pieces Per Box	Ft. Per Box	Soft PVC Seal?
801	1.5 Tri-Snap Rustication	1.5"	0.75"	0"	45°	24	192	YES
101	1.5 Snap Rustication	1.5"	0.5"	1"	60°	24	192	YES
756	1.25 Snap Rustication	1.25"	0.5"	0.75"	60°	32	256	YES



Standard Series

Our original—Designed for hiding fasteners when attaching to the slab. Base Clip track can be glued or screwed down, and rustication snaps in.



Available with either soft PVC sealing fins, or our rigid PVC "Flex-Edge" seal that seals tightly against the casting surface.

One-Piece Series

Victory Bear's One-Piece Rustication Series can be attached with glue or adhesive tape.

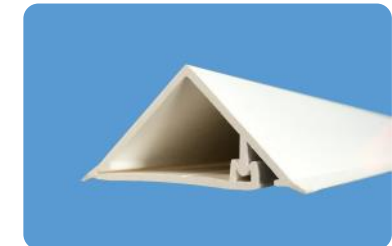
Each of these profiles features soft PVC sealing fins to eliminate the need for caulking against the casting surface.



Snap Series

Victory Bear's Snap Series is designed to enclose and hide fasteners. Can be screwed or glued to casting surface.

Available with soft PVC sealing fins that seal tightly against the casting surface to eliminate the need to caulk.



RUSTICATION INSTALLATION



STANDARD SERIES

Step 1- Fasten the Base Clip to the casting surface with fasteners, tape, or adhesive.



Step 2 - Press one end of the rustication's interlocking tooth grip into the end of the Base Clip.



Step 3 - Press the entire length of the rustication into the Base Clip.



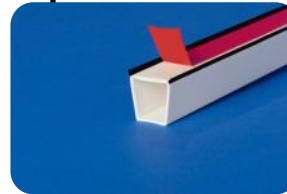
Step 4 - Check to ensure that the interlocking grips are fully engaged and the chamfer seal is pressed firmly against the casting surface.



ONE-PIECE

Step 1- Ensure the casting surface is clean and free of debris.

Step 2 - If using the pre-applied adhesive tape, peel the backer from the tape. Otherwise, use a construction adhesive.*



Step 3 - Press the entire length of the rustication into place. Allow the glue to dry per the manufacturer's directions.



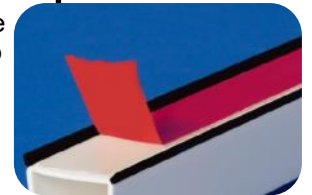
**Victory Bear recommends testing glue or tape adhesion strength with a mock-up to determine if they are suitable for your jobsite conditions.*



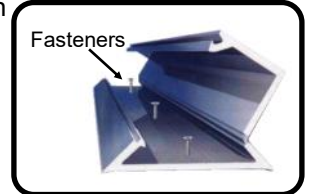
SNAP RUSTICATION

Step 1- Ensure the casting surface is clean and free of debris.

Step 2 - If fasteners are to be used, skip to Step 3. Otherwise, position the Snap Rustication in place using adhesives or tape*.



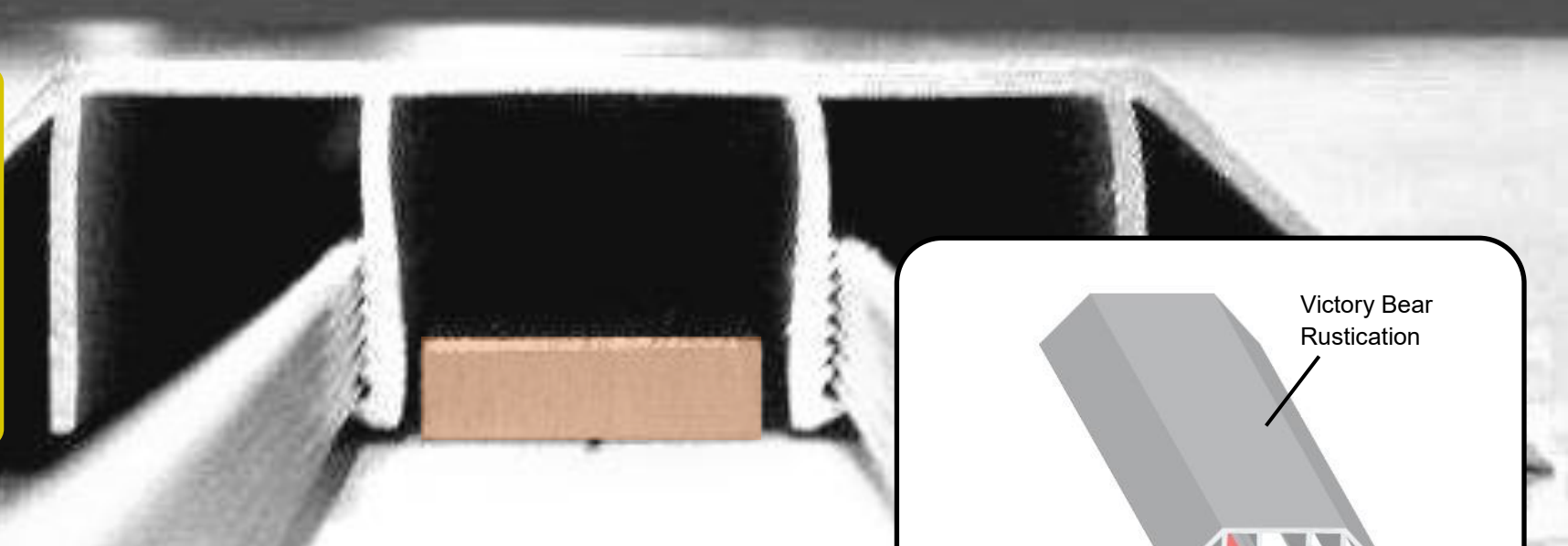
Step 3 - Open Snap Rustication and position it on the surface. Install fasteners (if using) through the bottom of the rustication and into casting surface below.



Step 4 - Close Snap Rustication. Ensure it is fully closed, and pressed firmly against the casting surface.



**Victory Bear recommends testing glue or tape adhesion strength with a mock-up to determine if they are suitable for your jobsite conditions.*



MAGNETIC BASE CLIP

Victory Bear's Rustication and Base Clip system is a perfect choice for your metal precast beds, thanks to our Magnetic Base Clip.

This system combines the superior Victory Bear finish with powerful magnets to securely fasten the forms to your bed.

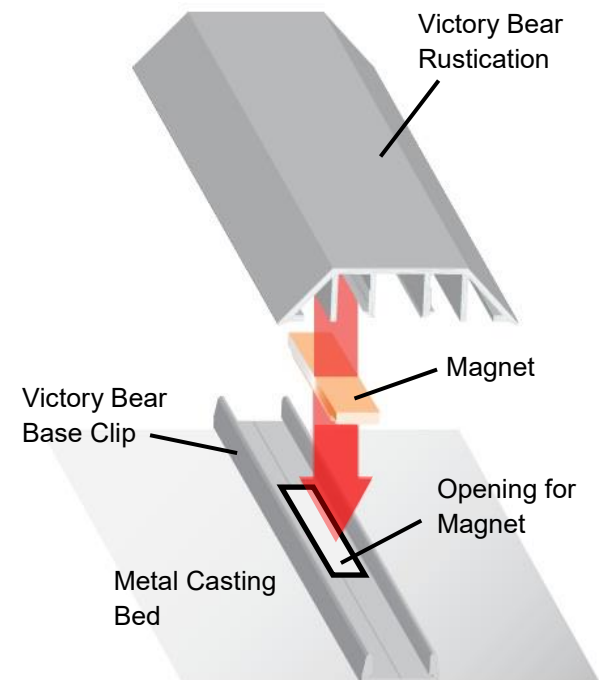
FEATURES & BENEFITS

Save Time and Money

Our specially designed magnets are reusable and install quickly and easily with the special Base Clip. Victory Bear's patented Flex-Edge Seal eliminates labor-intensive caulking.

The Victory Bear System

Our magnets can be used with any size Victory Bear Standard Series Rustication and Base Clip, and some Snap Series Rustication profiles. Call us for details.



Easy Installation

Simply place the special Base Clip on the casting surface and secure with the magnets.

MAGNETIC BASE CLIP



INSTALLATION

Step 1 - Place the special Base Clip on the casting bed according to the planned layout.

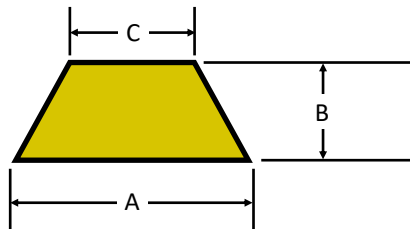
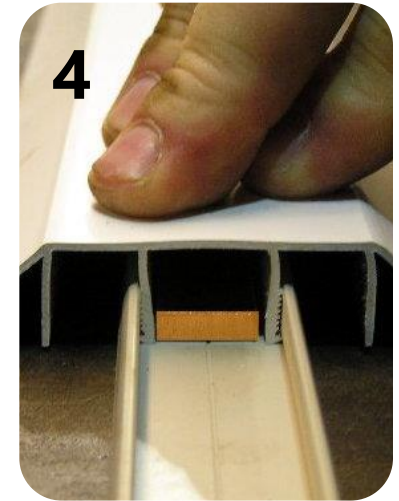
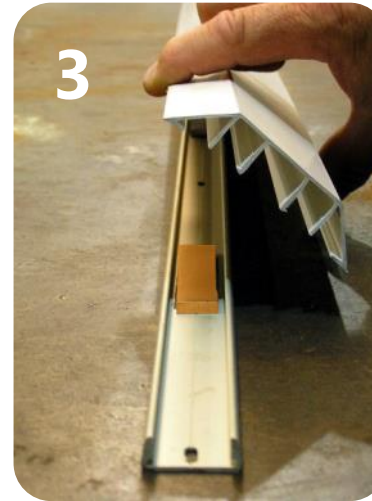
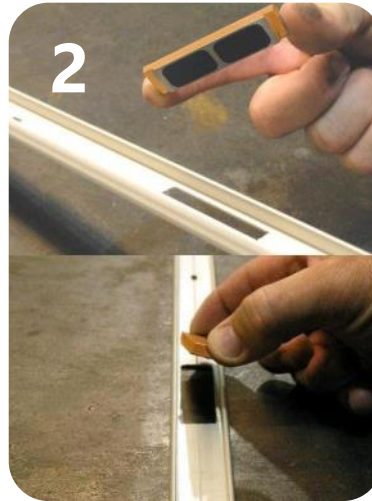
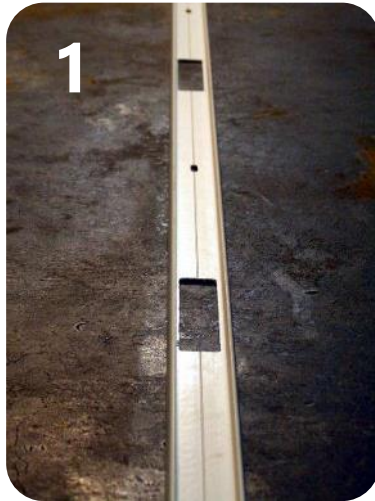
Step 2 - Secure Base Clip to the casting bed by placing magnets in each of the Base Clip's rectangular openings. The magnetic surface must make direct contact with the casting bed.

Step 3 - Press one end of the Rustication's interlocking tooth grip into the end of the Base Clip.

Step 4 - Press the entire length of the Rustication into the Base Clip.

Step 5 - Ensure the interlocking grips are fully engaged, and the Flex Edge Seal is set firmly against the casting bed.

Note: It is not necessary to caulk the edges of the Rustication.



Part Number	Part Name	Width "A"	Height "B"	Width "C"	Chamfer Angle	Pieces Per Box	Ft. Per Box	Soft PVC Seal?
976	Base Clip with Magnet Holes	N/A	N/A	N/A	N/A	60	480	N/A
956	1.25 Snap Rustication with Magnet Holes	1.25"	0.5"	0.75"	60°	32	256	YES
944	1.5 Tri-Snap Rustication with Magnet Holes	1.5"	0.75"	0"	45°	24	192	NO
201	1.5 Snap Rustication with Magnet Holes	1.5"	0.5"	1"	60°	28	224	YES
875	Magnet for Base Clip	N/A	N/A	N/A	N/A	N/A	N/A	N/A



SINGLE CHAMFER

Victory Bear chamfers produce the cleanest and sharpest finishes in the industry.

We offer a wide variety of chamfer styles and sizes for flexibility on your job. Each style has been designed to save you time and labor, eliminating time-consuming caulking, patching and grinding often required with other chamfer products.

FEATURES & BENEFITS

Flex-Edge Seal

Victory Bear Flex-Edge technology seals tightly against the casting surface, preventing concrete seepage while creating sharp, crisp lines.

Labor Savings

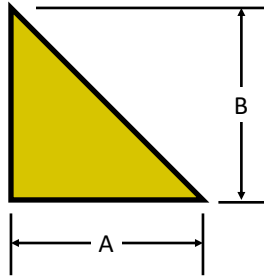
PVC provides a superior finish to wood. It releases cleanly from the concrete, and leaves no residue. The end result is a superior finish that leaves little to no finish work after the panels are lifted.



Wide Variety

No two jobs are the same, and Victory Bear provides several chamfer styles and sizes to choose from. Whether you're using glue, fasteners, or tape, Victory Bear is sure to have a profile that works for you.

SINGLE CHAMFER



Part Number	Part Name	Width "A"	Height "B"	Chamfer Angle	Pieces Per Box	Ft. Per Box	Soft PVC Seal?
736	Single Chamfer 0.75 (Standard)	0.75"	0.75"	45°	36	288	NO
735	Single Chamfer 0.5 (Standard)	0.5"	0.5"	45°	54	432	NO
765	Single Chamfer 0.75 (Hanging)	0.75"	0.75"	45°	36	288	NO
754	Single Chamfer 0.5 (Hanging)	0.29"	0.5"	60°	60	480	YES
934	LC Single Chamfer 0.5	0.5"	0.5"	45°	100	800	YES
933	LC Single Chamfer 0.5 (Tape)	0.5"	0.5"	45°	100	800	YES
930	LC Single Chamfer 0.75	0.75"	0.75"	45°	48	384	YES
929	LC Single Chamfer 0.75 (Tape)	0.75"	0.75"	45°	48	384	YES
937	LC Single Chamfer 1.0	1"	1"	45°	25	200	YES
938	LC Single Chamfer 1.0 (Tape)	1"	1"	45°	25	200	YES
759	Single Chamfer 0.75 (Bullnose)	0.75"	0.75"	N/A	20	160	YES
741	Drip Edge Single Chamfer 0.75	0.75"	0.75"	45°	40	320	NO
945	Drip Edge Single Chamfer 0.5 (Tape)	0.5"	0.5"	45°	25	200	YES

TRADITIONAL CHAMFERS

Standard Series

Our original—Features a horizontal fin for installing under the board or nailing to the top.

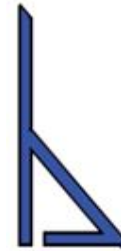
Includes our rigid PVC "Flex-Edge" seal that seals tightly against the casting surface.



Hanging Single Chamfer

Features a vertical nailing fin for easy attachment to the side of the board.

The Flex-Edge Seal creates clean lines with little to no patching and grinding after the panels have been lifted.



LC Single Chamfer

Great value! Soft PVC fins create clean lines with little to no patching, grinding, or caulking.

Available with or without adhesive tape.

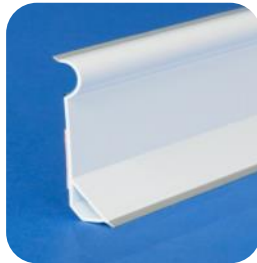


SPECIALTY CHAMFERS

Chamfer with Drip Edge

Ideal for creating a drip edge above windows and doors.

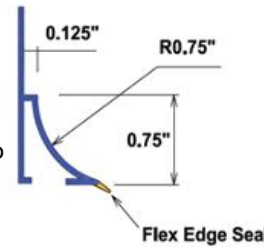
The Flex-Edge Seal creates clean lines with little to no patching and grinding.



Bullnose Single Chamfer

Creates a unique 3/4" radius detail at the panel edge.

The soft PVC Flex-Edge Seal creates clean lines with little to no patching and grinding.



SEE THE VICTORY BEAR DIFFERENCE



VICTORY BEAR PVC

WOOD CHAMFER



DOUBLE CHAMFER

Victory Bear chamfers produce the cleanest and sharpest finishes in the industry.

We offer a wide variety of double chamfer options for flexibility on your job. Each style has been designed to save you time and labor, eliminating time-consuming caulking, patching and grinding often required with other chamfer products.

FEATURES & BENEFITS

Flex-Edge Seal

Victory Bear Flex-Edge technology seals tightly against the casting surface, preventing concrete seepage while creating sharp, crisp lines.

Labor Savings

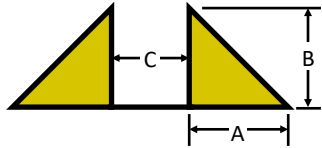
PVC provides a superior finish to wood. It releases cleanly from the concrete, and leaves no residue. The end result is a superior finish that leaves little to no finish work after the panels are lifted.

Multiple Options

With a wide variety of double chamfer products to meet multiple chamfer dimensions and board types, Victory Bear is sure to have an option to meet your needs.



DOUBLE CHAMFER



Standard Series

Can be attached with fasteners or adhesive.

Available with our rigid or soft PVC "Flex-Edge" seal that seals tightly against the casting surface.



Topside Double Chamfer

Flush top side allows for easier screeding.

Chamfer seals tightly against the wood form to create clean lines with little to no patching or grinding.

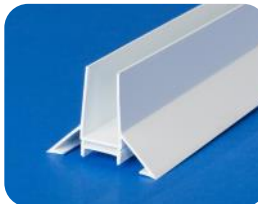


Bulkhead Double Chamfer

Available to use with Base Clip for hiding fasteners, or One-Piece for gluing down.

Bulkhead's Flex-Edge Seal creates clean lines with little to no patching or grinding.

Use with 3/4"-1" board.



Part Number	Part Name	Width "A"	Height "B"	Width "C"	Chamfer Angle	Pieces Per Box	Ft. Per Box	Soft PVC Seal?
733	Double Chamfer 2 x 1/2 (Standard)	0.5"	0.5"	1.5"	45°	20	160	YES
737	Double Chamfer 1.25 x 3/4 (Standard)	0.75"	0.75"	1.25"	45°	36	288	YES
755	Double Chamfer 1 x 1/2 (Standard)	0.28"	0.5"	0.75"	60°	16	128	YES
863	Double Chamfer 2 x 3/4 (Standard)	0.75"	0.75"	1.5"	45°	30	240	YES
809	High Double Chamfer 2 x 3/4 (Standard)	0.75"	0.75"	1.5"	45°	18	144	YES
725	One-Piece Bulkhead Double Chamfer 1 x 3/4	0.75"	0.75"	0.75"	45°	12	96	YES
767	Bulkhead Double Chamfer 1 x 3/4*	0.75"	0.75"	0.75"	45°	12	96	NO
804	Double Chamfer 1.25 x 3/4 Topside	0.75"	0.75"	1.25"	45°	TBD	TBD	NO
806	Double Chamfer 2 x 3/4 Topside	0.75"	0.75"	1.5"	45°	25	200	NO
803	Double Chamfer 1 x 3/4" Topside	0.75"	0.75"	0.75"	45°	18	144	NO

*Base Clip Required

INSTALLATION

Step 1 - Fix the Double Chamfer into place using fasteners, tape, or adhesive.

Step 2 - Check to ensure the chamfer's edge is pressed firmly against the casting surface.

Step 3 - Insert lumber into the channel along the length of the Double Chamfer. For wood that is swollen beyond standard dimensions, insert one side first against the flex edge, then roll the other side into the channel.

SEE THE VICTORY BEAR DIFFERENCE



VICTORY BEAR PVC



WOOD CHAMFER



BULKHEAD

Victory Bear chamfers produce the cleanest and sharpest finishes in the industry.

Our Bulkhead double chamfer has been designed for use with 3/4" form board or standard plywood, for a 40% to 60% lumber savings over a traditional 2x. PVC provides a superior finish to wood forms, saving you time and labor costs after the walls are tilted up.

FEATURES & BENEFITS

Flex-Edge Seal

Victory Bear Flex-Edge technology seals tightly against the casting surface, preventing concrete seepage while creating sharp, crisp lines.

Multiple Fastening Options

With Victory Bear Standard Series Bulkhead and Base Clip, all fasteners are hidden under the surface to prevent them from casting into the wall panel.

The One-Piece Bulkhead provides the added convenience of gluing the product directly to the slab.



Labor Savings

PVC provides a superior finish to wood. It releases cleanly from the concrete, and leaves no residue. The end result is a superior finish that leaves little to no finish work after the panels are lifted.

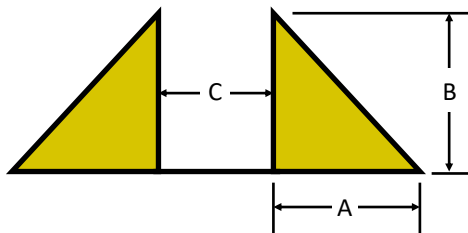
BULKHEAD



#725 One-Piece Bulkhead with #803 Topside Double Chamfer 1x3/4"



#767 Standard Series Bulkhead attached with #876 Base Clip



Part Number	Part Name	Width "A"	Height "B"	Width "C"	Chamfer Angle	Pieces Per Box	Ft. Per Box	Soft PVC Seal?
725	One-Piece Bulkhead Double Chamfer 1 x 3/4	0.75"	0.75"	0.75"	45°	12	96	YES
767	Standard Series Bulkhead Double Chamfer 1 x 3/4*	0.75"	0.75"	0.75"	45°	12	96	NO
876	Base Clip	N/A	N/A	N/A	N/A	60	480	N/A
803	Double Chamfer 1 x 3/4" Topside	0.75"	0.75"	0.75"	45°	18	144	NO

*Base Clip Required

BULKHEAD INSTALLATION



STANDARD SERIES

Step 1 - Fasten Base Clip to casting surface with fasteners, tape, or adhesive.

Step 2 - Press one end of Bulkhead's interlocking teeth into one end of Base Clip.

Step 3 - Continue pressing the entire length of Bulkhead into Base Clip.

Step 4 - Ensure that interlocking teeth are fully engaged, and chamfer seal is pressed firmly against casting surface.

Step 5 - Using a 1" nominal board, apply downward pressure in the Bulkhead channel, working from one end to the other until it is seated in the channel. This creates a friction fit with the board, preventing it from rising during the pour. No nailing is necessary.

Step 6 - Use an H style roofing clip between each section of lumber to align, or use #803 Topside Double Chamfer 1 x 3/4" if desired.



ONE-PIECE

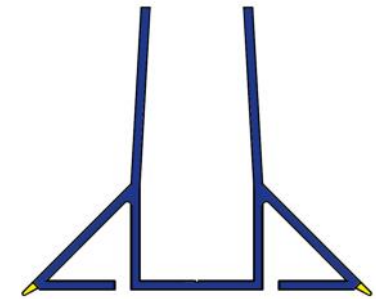
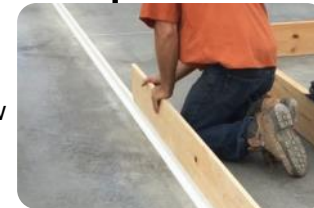
Step 1 - Ensure the casting surface is clean and free of debris.

Step 2 - Apply adhesive according to the manufacturer's best practices.

Step 3 - Press the entire length of the Bulkhead into place. Allow the glue to dry per the manufacturer's directions.

Step 4 - Using a 1" nominal board, apply downward pressure in the Bulkhead channel, working from one end to the other until it is seated in the channel. This creates a friction fit with the board, preventing it from rising during the pour. No nailing is necessary.

Step 5 - Use an H style roofing clip between each section of lumber to align, or use #803 Topside Double Chamfer 1 x 3/4" if desired.



#725 One-Piece Bulkhead



#767 Standard Series Bulkhead with #876 Base Clip



ARCHITECTURAL DRIP EDGE

Victory Bear's Architectural Drip Edge is made of rigid and flexible PVC for excellent performance and value. The rigid PVC creates a superior finish, while the flexible PVC seals tightly against the form board, eliminating the need for caulking the edges. It can be mounted in any position, making it the perfect choice for doors, windows, and other openings.

FEATURES & BENEFITS

Flex-Edge Seal

Victory Bear Flex-Edge technology seals tightly against the casting surface, preventing concrete seepage while creating sharp, crisp lines.

Labor Savings

PVC provides a superior finish to wood. It releases cleanly from the concrete, and leaves no residue. The end result is a superior finish that leaves little to no finish work after the panels are lifted.



Greater Versatility

Victory Bear's Architectural Drip Edge is a single-piece design that can be installed at any desired position and depth, giving you unlimited options for your window and door openings.

ARCHITECTURAL DRIP EDGE



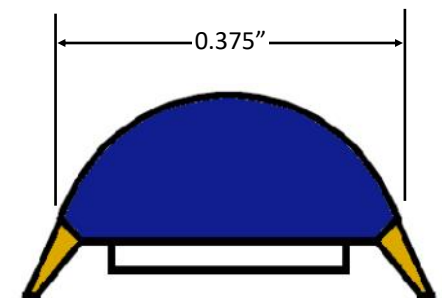
INSTALLATION

Simply remove the backing of the built-in adhesive tape and firmly press into place.*

**Surface must be free of dust, oil, and debris.*



Part Number	Part Name	Pieces Per Box	Ft. Per Box	Soft PVC Seal?
909	Architectural Drip Edge with Tape	100	800	YES
904	Architectural Drip Edge no Tape	100	800	YES





UNIVERSAL DRIP EDGE

Victory Bear's Universal Drip Edge is made of rigid and flexible PVC for excellent performance and value. The rigid PVC creates a superior finish, while the flexible PVC seals tightly against the form board, eliminating the need for caulking the edges. It is scored for easy positioning, giving you added control and versatility when creating doors, windows, and other openings.

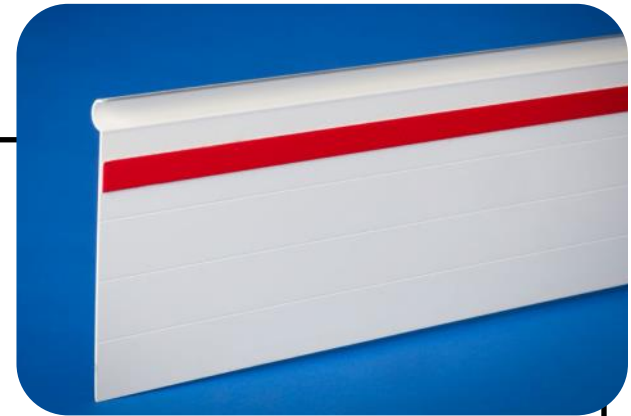
FEATURES & BENEFITS

Flex-Edge Seal

Victory Bear Flex-Edge technology seals tightly against the casting surface, preventing concrete seepage while creating sharp, crisp lines.

Labor Savings

PVC provides a superior finish to wood. It releases cleanly from the concrete, and leaves no residue. The end result is a superior finish that leaves little to no finish work after the panels are lifted.



Added Versatility

Victory Bear's Universal Drip Edge is scored at 1" increments, allowing you to easily adjust the depth of the drip edge from 2 to 5 inches. Its straight edge ensures level positioning.

UNIVERSAL DRIP EDGE



INSTALLATION

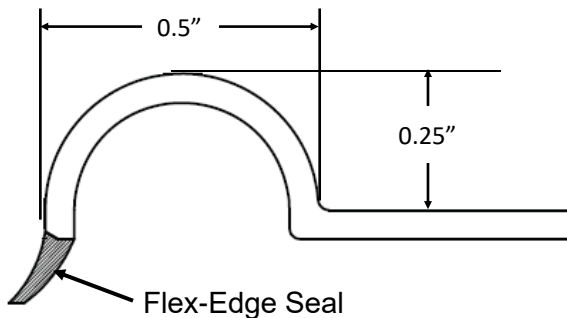
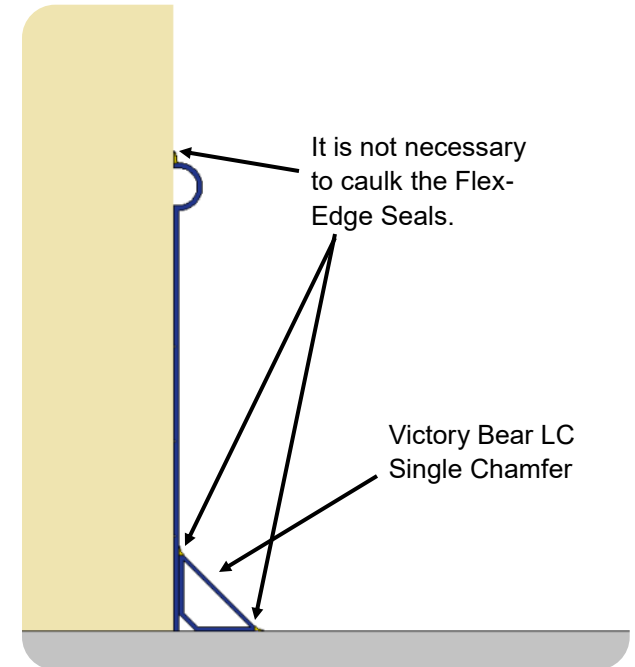
Step 1 - Determine the desired depth of the drip edge. If placing at a depth of less than 5" from the outside wall, cut the appropriate score line with a utility knife, then break at the score line.

Step 2 - Peel away the backing from the adhesive tape.

Step 3 - Using the bottom of the Universal Drip Edge piece as a guide against the casting surface, firmly press the adhesive into place onto the form board.

Step 4 - Set any Victory Bear chamfer into place by removing the backing from its adhesive tape and adhering it to the casting surface. Make sure there are no gaps between the Flex-Edge Seals and the contact surfaces.

Step 5 - Caulk only the ends of the Universal Drip Edge, as well as any joints. It is not necessary to caulk along the Flex-Edge Seals.



Part Number	Part Name	Pieces Per Box	Ft. Per Box	Soft PVC Seal?
710	Universal Drip Edge with Tape	24	192	YES
792	Universal Drip Edge no Tape	32	256	YES



SLAB SAVER

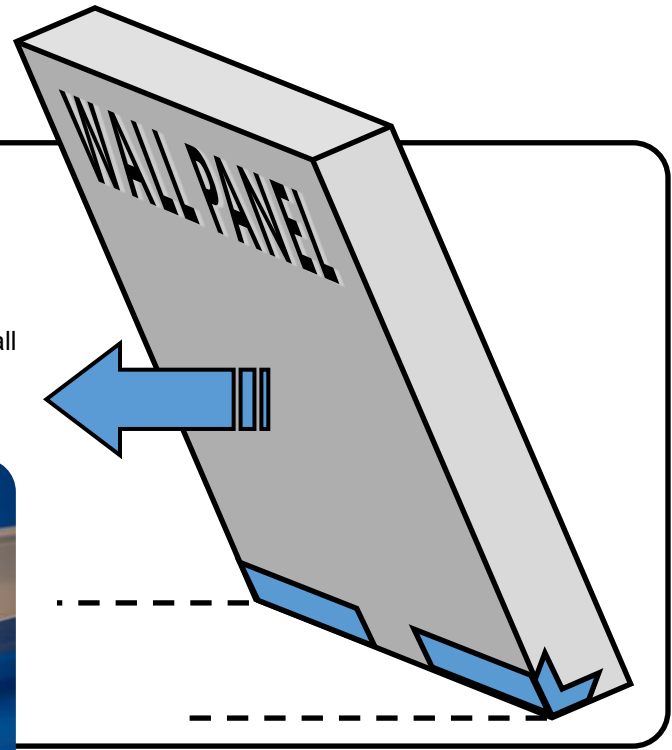
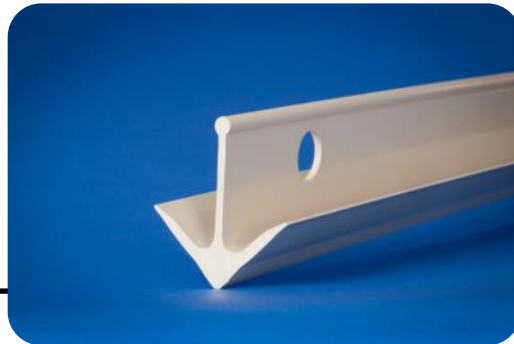
Victory Bear Slab Savers are a safe, effective, and easy way of protecting floors from damage when walls are lifted. Installation is quick and simple, and the result is a smooth, clean floor that saves time and labor after the tilt.

Victory Bear Slab Savers are made in the USA of high quality, impact resistant PVC that will never rot when left in the wall panel.

FEATURES & BENEFITS

Eliminates Floor Repairs

Victory Bear Slab Saver virtually eliminates the need for costly floor repairs. The plastic Slab Saver is installed in the corner of the wall panel, and harmlessly glides along the slab when the panel is lifted.



SLAB SAVER



INSTALLATION

Step 1 - Set a piece of Slab Saver into the form at 18" from each edge, and one in the center of the panel. If the wall panel is to be wider than 20', add one additional piece of Slab Saver every 5 feet.



Step 2 - Secure to the form using nails.

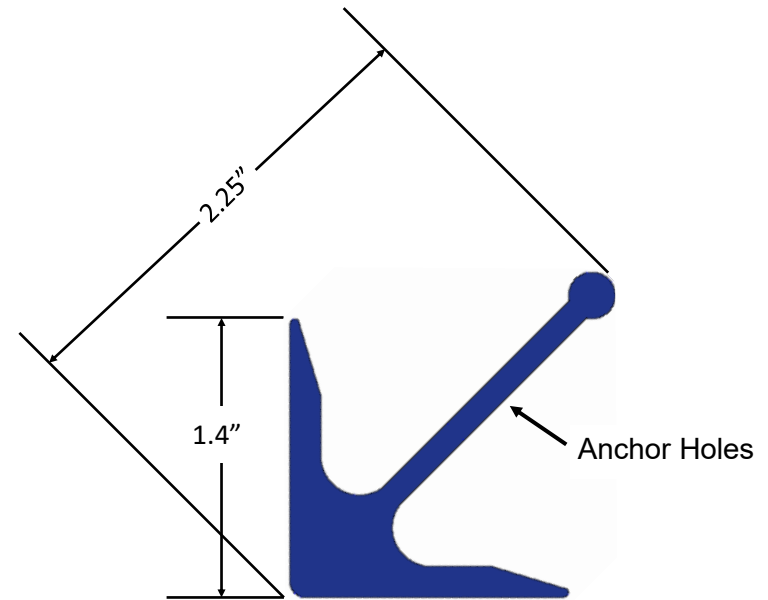


Step 3 - Use of chamfer strips is recommended between each piece of Slab Saver.

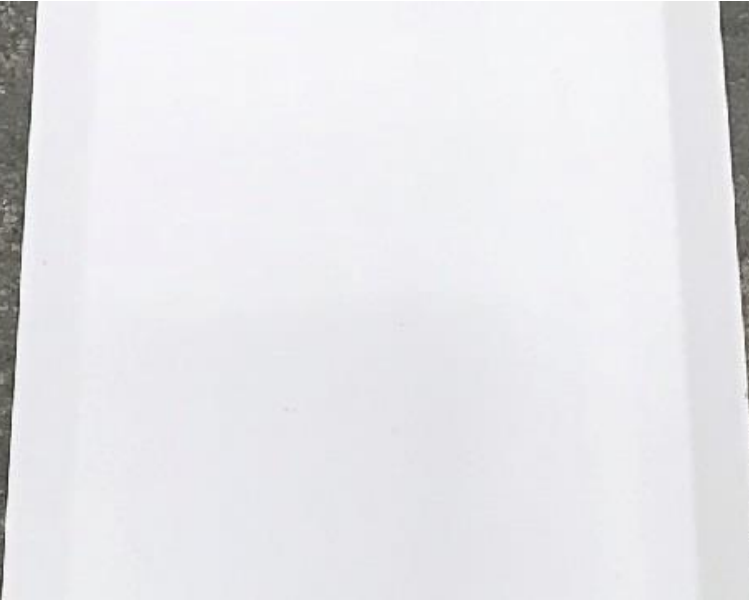
Step 4 - Pour concrete. Normal vibration of the concrete ensures it will correctly surround the Slab Saver.



Step 5 - Slab Saver stays in the wall panel and is not removed.



Part Number	Part Name	Pieces Per Box	Ft. Per Box
787	Victory Bear Slab Saver	42	84



WALL JOINT COVER

Victory Bear's Wall Joint Covers are an attractive and easy way to finish interior concrete wall joints.

Ideal for covering 1/4" to 1" gaps between panel joints in concrete walls, these durable PVC inserts eliminate the need for expensive caulking material and labor.

FEATURES & BENEFITS

Save Time and Money

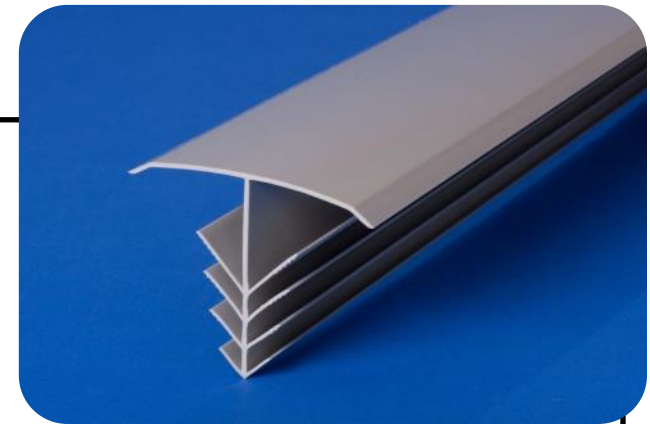
Simply insert the Wall Joint Cover between the wall panels for a tight fit. There's no longer a need for expensive caulking between joints.

Eliminates Gaps

Wall Joint Cover fits tightly into the gaps to cover the panel joints.

Looks Great

Victory Bear's Wall Joint Covers are made with a smooth, attractive surface which is ready to install right out of the box in standard gray.



Can Be Painted

If a custom color is required, the Victory Bear Wall Joint Cover can be primed and painted.

WALL JOINT COVER



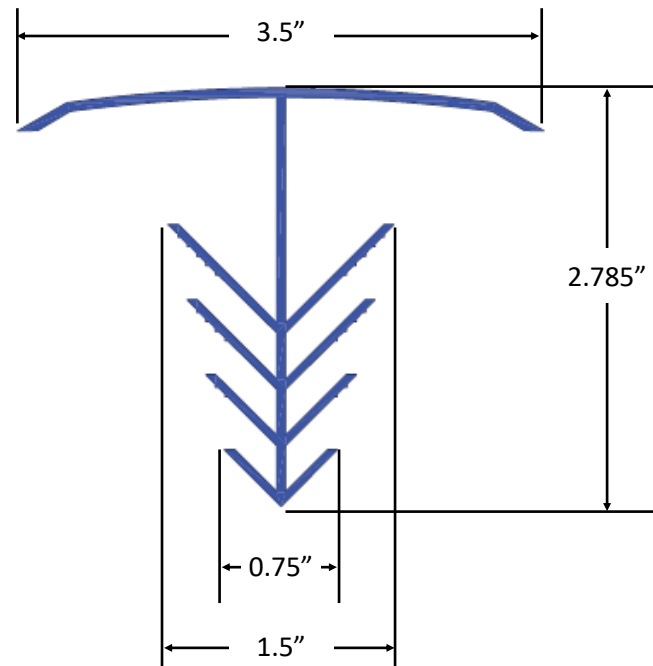
INSTALLATION

Step 1– Align the center “V” nose with the center of the joint and apply pressure, starting from one end of the Wall Joint Cover and working toward the opposite end.

Step 2 - Once the Wall Joint Cover has been started, the face can be tapped into the place with a rubber mallet or a hammer and wood block.

Step 3 - After installation, Wall Joint Cover may be primed and painted to match existing surfaces, or left unfinished.

Wall Joint Cover is for interior wall joints only.



Part Number	Part Name	Pieces Per Box	Ft. Per Box
727	Wall Joint Cover	12	96



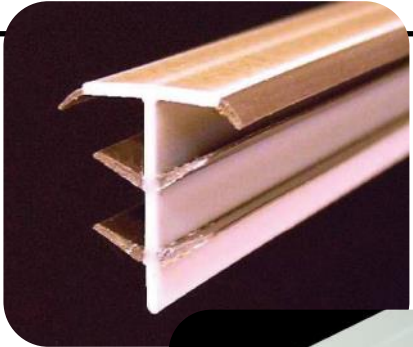
SAW CUT COVER

Victory Bear's Saw Cut Cover is a coextruded PVC temporary joint filler that quickly and easily protects and seals saw cut joints in casting slabs. The Saw Cut Cover's flexible fins eliminate concrete seepage into saw cut joints, which can cause unwanted defects in the surface of the wall panel. Victory Bear has Saw Cut Cover options to cover joints ranging from 1/16" to 1/4" wide.

FEATURES & BENEFITS

The Best of Both Worlds

Victory Bear's combination of rigid and flexible PVC aids in function and ease of use. Its rigid structure makes it easy to install compared to completely flexible brands. The flexible fins ensure a secure fit in imperfect saw cuts, and a tighter seal against the slab than with completely rigid varieties.



Save Time and Labor

The Victory Bear Saw Cut Cover's ease of use makes it the perfect labor-saving choice. Installs quickly and easily to protect the control joints in your casting slab. Plus, its tight seal eliminates ridges in the concrete wall, saving you hours of costly grinding time and labor.



SAW CUT COVER



Victory Bear's original coextruded design—a rigid skeleton with soft PVC fins—makes for a much more user-friendly, highly functional product.



SEE THE VICTORY BEAR DIFFERENCE

Victory Bear's Saw Cut Cover eliminates the costly time and labor that would be otherwise needed to grind away and patch wall surface defects from unprotected saw cut joints.



Part Number	Part Name	Range of Saw Cut Width	Pieces Per Box	Ft. Per Box
872	Saw Cut Cover 1/16"	1/16"-1/8"	100	800
862	Saw Cut Cover	1/8"-1/4"	100	800



INSULATED PANEL CAP (IPC)

Let Victory Bear help you protect your insulated concrete panels.

Victory Bear's Insulated Panel Cap is designed to help protect the insulation and cavity in precast sandwich panels from the possibility of moisture penetration.

FEATURES & BENEFITS

Save Time & Money

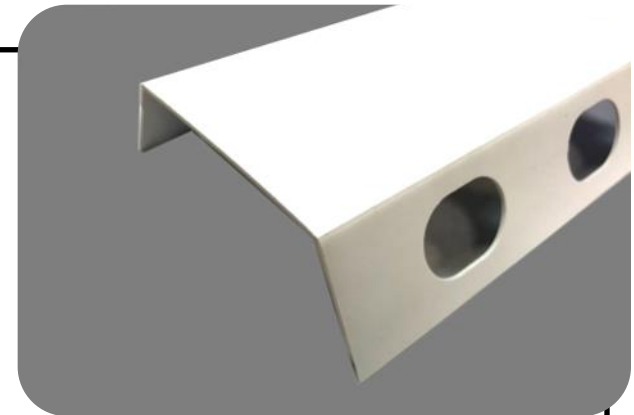
Victory Bear IPC eliminates the need for expensive sealing tape around panel edges and window and door openings.

Easy Installation

IPC simply attaches to the side rail with adhesive tape prior to the pour.

Excellent Protection

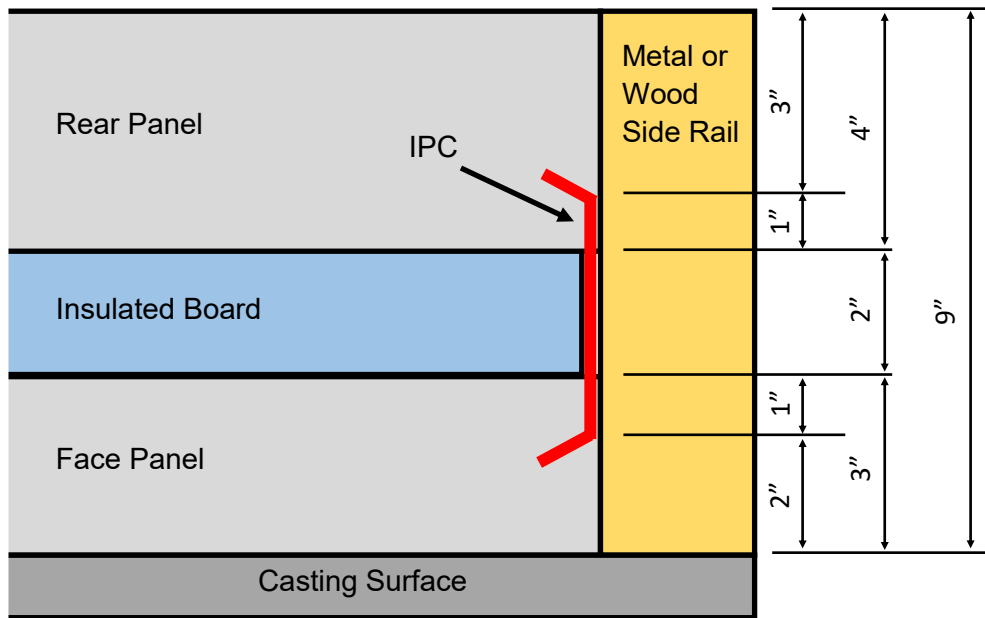
IPC is made of durable rigid PVC, providing maximum protection against moisture penetration.



INSULATED PANEL CAP (IPC)



INSTALLATION DIAGRAM



Victory Bear IPC is attached to the side rail with adhesive tape before pouring concrete.

SEE THE VICTORY BEAR DIFFERENCE

When left unprotected, the insulation and cavity are vulnerable to moisture penetration.

Victory Bear's Insulated Panel Cap provides valuable protection with minimal effort.



Part Number	Part Name	Pieces Per Box	Ft. Per Box	Use with Insulation Thickness:
26501	4" IPC 10'	30	300	2"-3"
26502	4" IPC 14'	20	280	2"-3"
26504	2.5" IPC 14'	25	350	1"
26509	1.5" IPC 14'	25	350	0.5"

For an installation video, scan below:





FLEX-TITE INSULATION CLIP

Victory Bear's Flex-Tite insulation clips are a two-piece system for quickly and easily sealing and finishing the seams in rigid foam insulation. Attractive and functional, Flex-Tite clips are designed to save installation labor and energy costs.

FEATURES & BENEFITS

Energy Efficient Design

Our Flex-Tite technology seals tightly against the insulation board to reduce thermal loss at the seams.

Long Lasting

Flex-Tite clips are an attractive and durable option for sealing and finishing seams in insulation board. Once installed, they will likely never need replacing.

Convenient Fastening

The Flex-Tite Female piece features a convenient fastening leg for easy access with a nail gun, reducing installation time. The matching Male piece then snaps in for a tight fit.



FLEX-TITE INSTALLATION

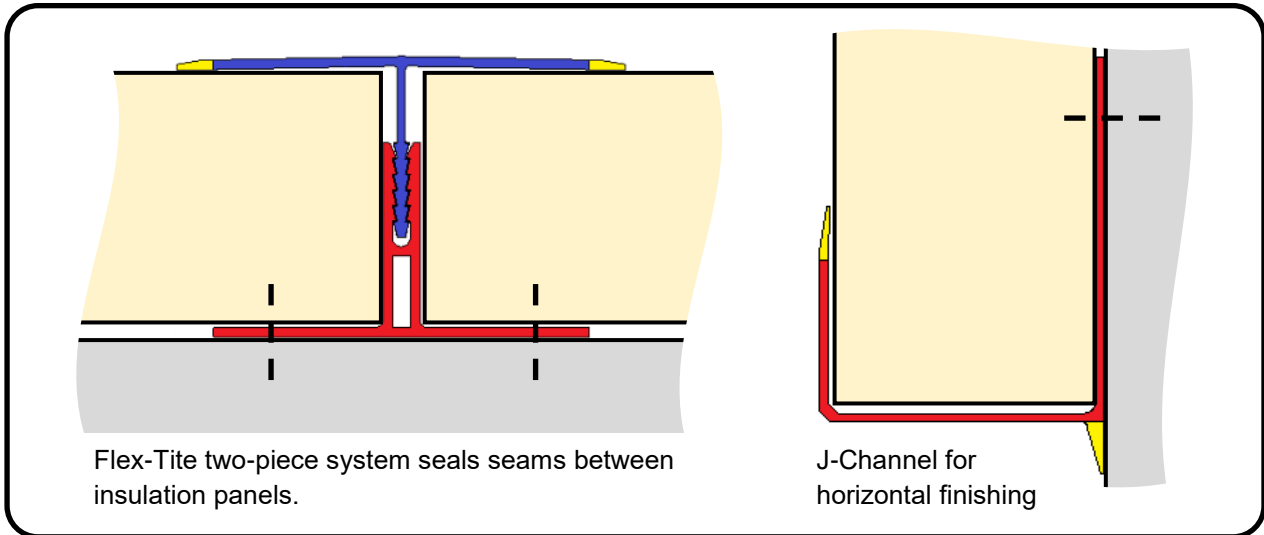


INSTALLATION

Step 1 - Align the Flex-Tite J-Channel horizontally at the desired height and check for level. Nail or staple into place.

Step 2 - Align the Flex-Tite Female clip vertically at desired spacing and check for plumb. Use a 3/4" to 1" nail to affix to the concrete wall.

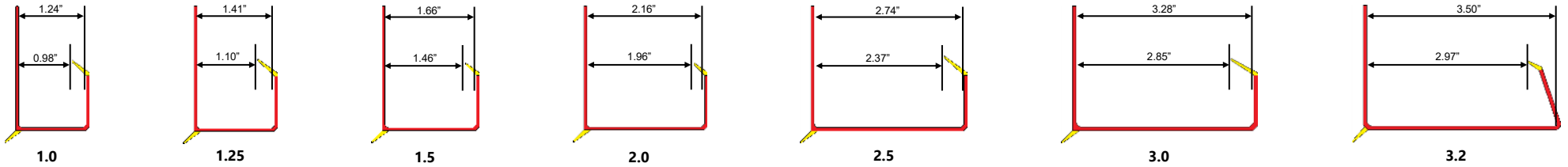
Step 3 - Install the insulation board per the manufacturer's instructions. Clip the Flex-Tite Male into the Female, then repeat Steps 1-3.



FLEX-TITE DIMENSIONS AND PAIRINGS

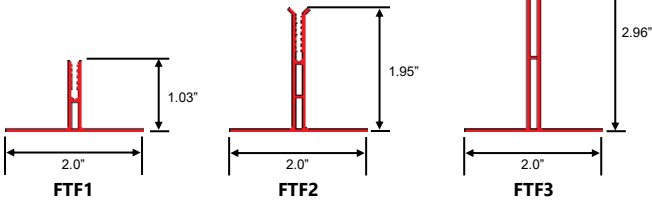


VICTORY BEAR J-CHANNEL

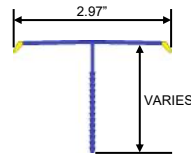


VICTORY BEAR FLEX-TITE

FEMALE CLIP (FTF)



MALE CLIP (FTM)



FLEX-TITE SIZE CHART

Board Thickness	Flex-Tite Female	Flex-Tite Male	J-Channel
1"	FTF1	FTM03	1540
1.25"	FTF1	FTM03	751
1.5"	FTF1	FTM06	769
1.75"	FTF1	FTM09	1158
2"	FTF2	FTM05	1541
2.25"	FTF2	FTM09	1541
2.5"	FTF2	FTM10	1153
2.75"	FTF2	FTM13	1547*
3.0"	FTF3	FTM05	1547
3.2"	FTF3	FTM06	1560
3.5"	FTF3	FTM10	N/A
4.0"	FTF3	FTM14*	N/A

*Special order

Part Number	Style Number	Part Name	Pieces Per Box	Ft. Per Box
748	FTF1	Flex-Tite Female 1	20	200
970	FTF2	Flex-Tite Female 2	20	200
1548	FTF3	Flex-Tite Female 3	20	200
786	FTM03	Flex-Tite Male 03	20	200
764	FTM05	Flex-Tite Male 05	20	200
749	FTM06	Flex-Tite Male 06	20	200
762	FTM09	Flex-Tite Male 09	20	200
771	FTM10	Flex-Tite Male 10	20	200
772	FTM13	Flex-Tite Male 13	20	200
1540	1540	J-Channel 1.0"	20	200
751	751	J-Channel 1.25"	20	200
769	769	J-Channel 1.5"	20	200
1158	1158	J-Channel 1.75"	20	200
1541	1541	J-Channel 2.0"	20	200
1153	1153	J-Channel 2.5"	20	200
1547	1547	J-Channel 2.75"-3.0"	20	200
1560	1560	J-Channel 3.2"	20	200



QUICK CLIP

The Victory Bear Quick Clip insulation retaining system is ideal for sealing the seams between rigid insulation boards. Its quick and easy installation method—Quick Clip can withstand the impact of a nail gun—helps reduce your overall costs. Its attractive finish also provides a superior look for your insulated walls.

FEATURES & BENEFITS

Energy Efficient Design

Quick Clips are coextruded from rigid and soft PVC to form an air-tight seal against the insulation board.

Long Lasting

Quick Clips are an attractive and durable option for sealing and finishing seams in insulation board. Once installed, they will likely never need replacing.

UL Tested

Class A material, tested by Underwriters Laboratories (UL 723—test for surface burning characteristics of building materials). Flame spread is 0 and smoke developed equals 190.



QUICK CLIP INSTALLATION

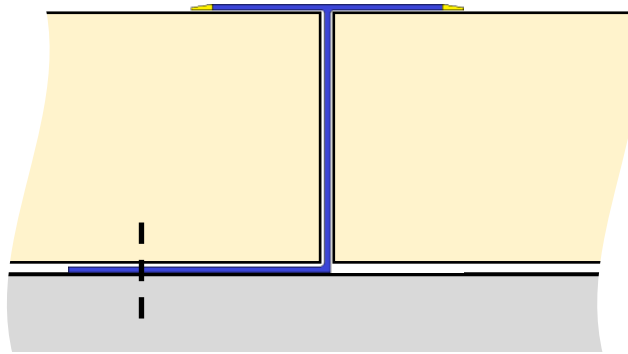


INSTALLATION

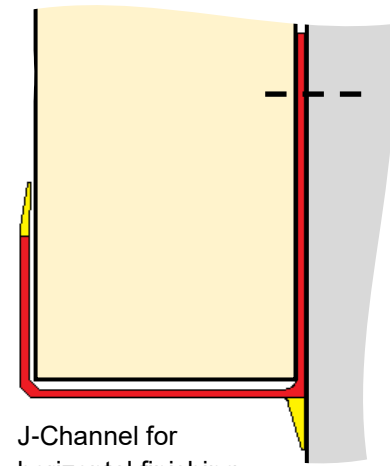
Step 1 - Align the Victory Bear J-Channel horizontally at the desired height and check for level. Nail or staple into place.

Step 2 - Align the Quick Clip vertically at desired spacing and check for plumb. Use a 3/4" to 1" nail to affix to the concrete wall through the nail fin.

Step 3 - Install the insulation board per the manufacturer's instructions. Board should be tucked under the Quick Clip "T" section for a tight seal.



Quick Clip seals seams between insulation panels.



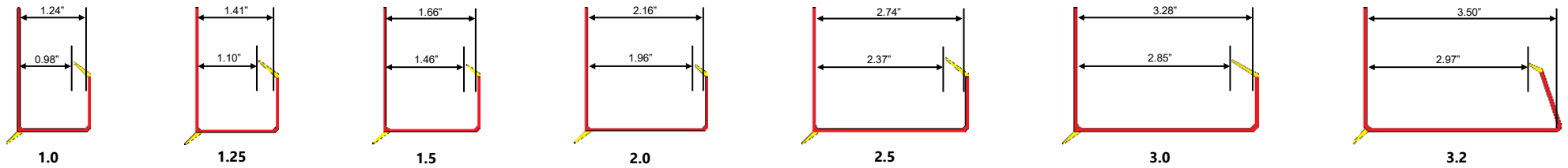
J-Channel for horizontal finishing



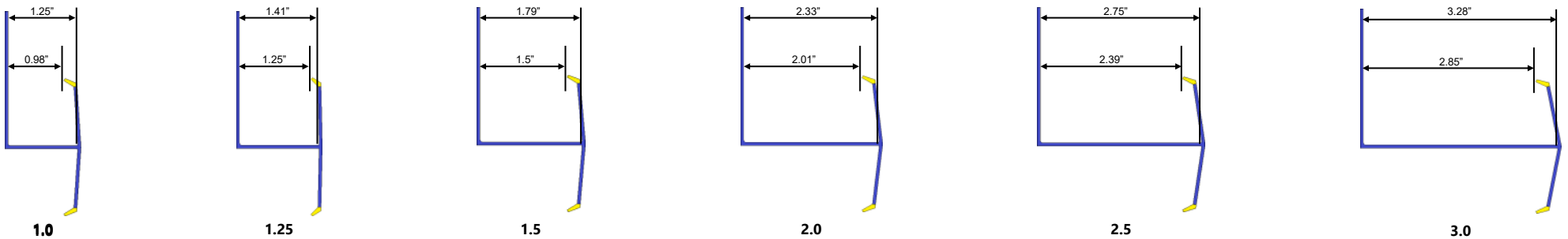
QUICK CLIP DIMENSIONS



VICTORY BEAR J-CHANNEL



VICTORY BEAR QUICK CLIP



VICTORY BEAR J-CHANNEL PRODUCT INFORMATION

Part Number	Part Name	Pieces Per Box	Ft. Per Box
1540	J-Channel 1.0"	20	200
751	J-Channel 1.25"	20	200
769	J-Channel 1.5"	20	200
1158	J-Channel 1.75"	20	200
1541	J-Channel 2.0"	20	200
1153	J-Channel 2.5"	20	200
1547	J-Channel 2.75"-3.0"	20	200
1560	J-Channel 3.2"	20	200

VICTORY BEAR QUICK CLIP PRODUCT INFORMATION

Part Number	Part Name	Pieces Per Box	Ft. Per Box
1552	Quick Clip 1.0"	20	200
861	Quick Clip 1.25"	20	200
1551	Quick Clip 1.5"	20	200
1553	Quick Clip 2.0"	20	200
1555	Quick Clip 2.5"	20	200
1554	Quick Clip 3.0"	20	200