



J-CHANNEL

Victory Bear J-Channels provide a clean and attractive finish for polyiso and fiberglass insulation. They are designed for ease of installation, durability, and energy efficiency.

The J-Channel matches Victory Bear's Flex-Tite and Quick Clip products in appearance and properties, making it the perfect option for a complete insulation retaining system.

FEATURES & BENEFITS

Energy Efficient Design

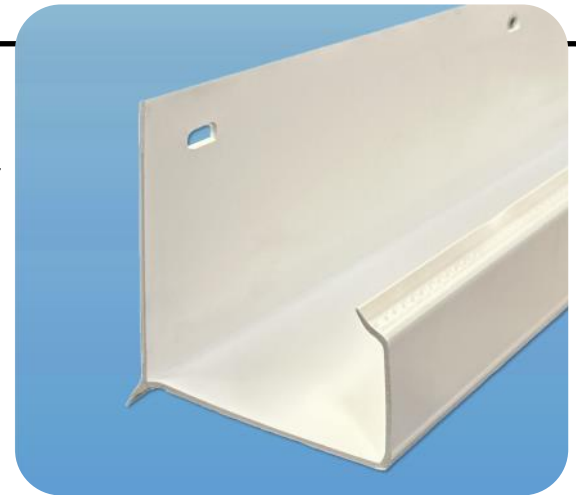
Victory Bear J-Channel's flexible fins create an air seal against both the polyiso board and the substrate wall, preventing thermal loss.

Impact Resistant

The J-Channel can be cut with power saws, and can withstand the impact of nail guns, making installation easy.

Attractive Bright White Finish

Victory Bear J-Channel is manufactured with an attractive white finish that does not require painting.



J-CHANNEL INSTALLATION

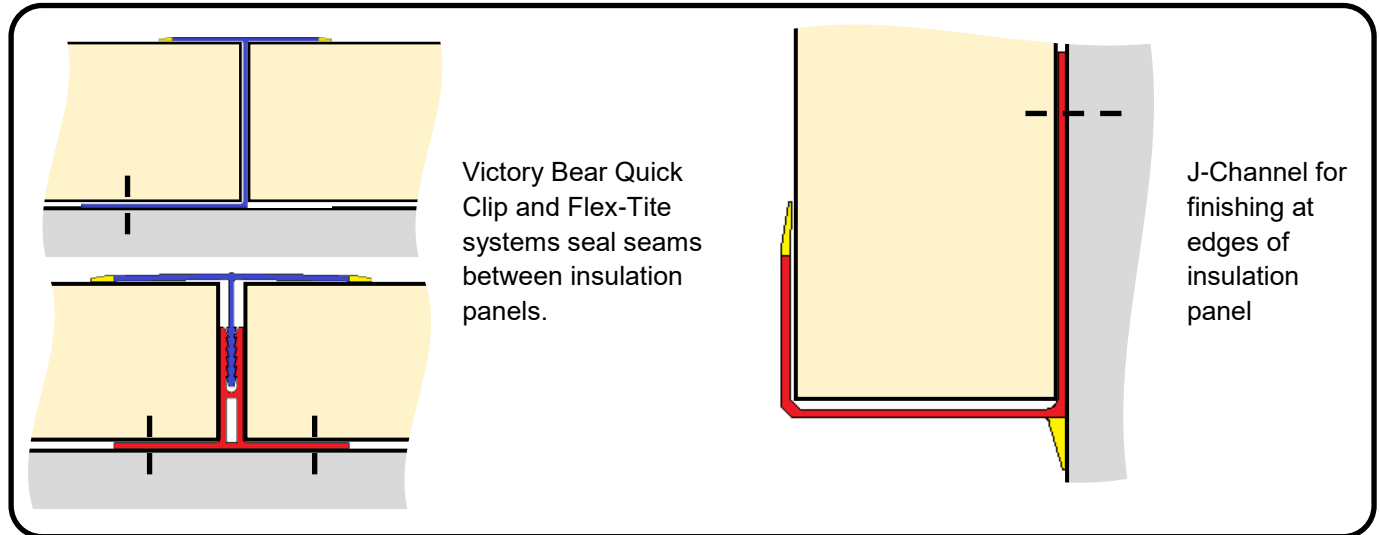


INSTALLATION

Step 1 - Align the J-Channel horizontally at the desired height and check for level. Use a 3/4" to 1" nail to affix to the concrete wall through the nail fin. Attach at openings and other areas where insulation edges would be exposed as well.

Step 2 - If using, attach the Victory Bear Quick Clip or Flex-Tite to the substrate wall per the product instructions.

Step 3 - Insert the insulation board into the J-Channel and attach to the wall per the manufacturer's instructions. Board should be tucked under the J-Channel's flexible fin.



SEE THE VICTORY BEAR DIFFERENCE

Foil Tape vs. Victory Bear

The image on the left illustrates how the use of tape to finish the edges and seams of polyiso board can lead to unattractive and undesirable results.

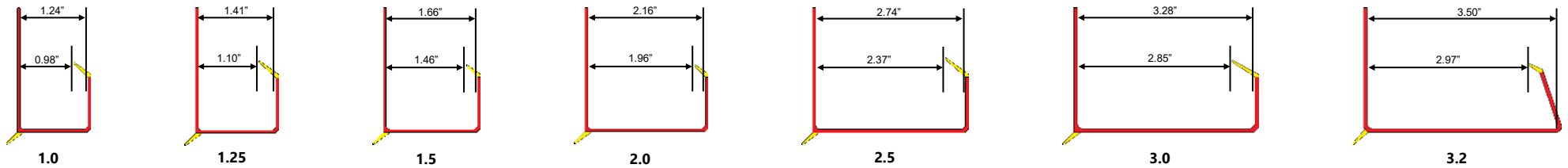
On the left, Victory Bear J-Channel and Flex-Tite were used to create a durable and attractive finish.



J-CHANNEL DIMENSIONS



VICTORY BEAR J-CHANNEL



VICTORY BEAR J-CHANNEL PRODUCT INFORMATION

Part Number	Part Name	Pieces Per Box	Ft. Per Box
1540	J-Channel 1.0"	20	200
751	J-Channel 1.25"	20	200
769	J-Channel 1.5"	20	200
1158	J-Channel 1.75"	20	200
1541	J-Channel 2.0"	20	200
1153	J-Channel 2.5"	20	200
1547	J-Channel 3.0"	20	200
1560	J-Channel 3.2"	20	200

