



Victory Bear Products

Fukuvi, USA

Customer support: Jon Dresel

Phone: (937) 236-7288, ext. 231

Fax: (937) 236-7289

E-mail: jdresel@fukuvi-usa.com

www.victorybear.com



VICTORY BEAR

TTF

Tri-Technology Flashing

Installation Guide

Contents

Page 3: Storage, Handling

Tools

Page 4: TTF Products

Page 5: Installation Procedures

1. Preparing the surface

2. Outside Corner Installation

Page 6: 3. Inside Corner Installation

4. Installing the Body

Page 7: 5. Installing the Flashing

Page 8: 6. Installing at Stepped Foundations

Page 9: 7. Installing End Caps at Doors & Windows

Page 10: Other Procedures

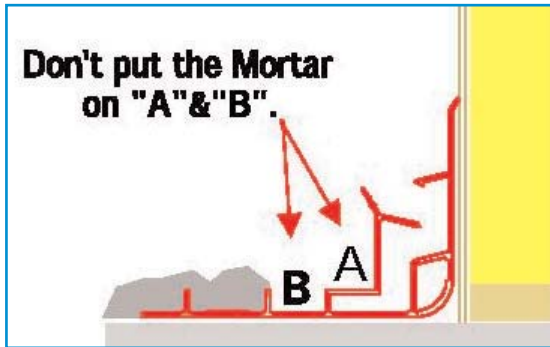
Laying in the bricks

Page 11: Notes

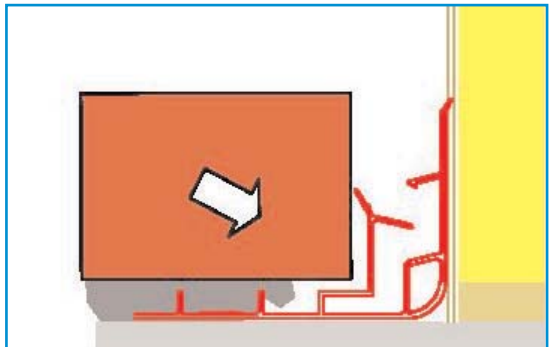
Notes

Other Procedures

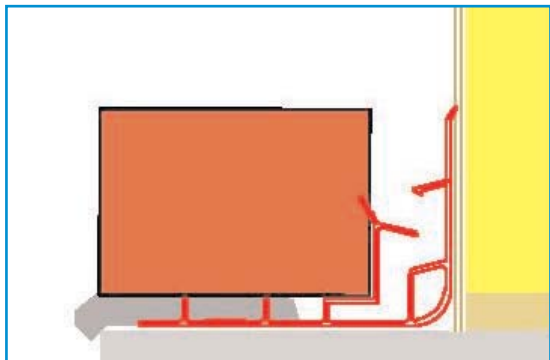
Laying in the bricks



- 1) Heap the mortar up. Place the mortar on body. Do not put mortar on A and B



- 2) Push the first brick layer on the edge of the body, adjusting the height to avoid dropping mortar on the other side



- 3) Lay bricks normally from the second brick layer

Storage and Handling

- Lay flat and avoid direct sunlight and extreme heat (above 120° F) – direct sunlight or storing vertically may cause the material to warp

- To avoid breaking or cracking in low temperatures (below 32° F), be careful when handling

- Keep away from solvents

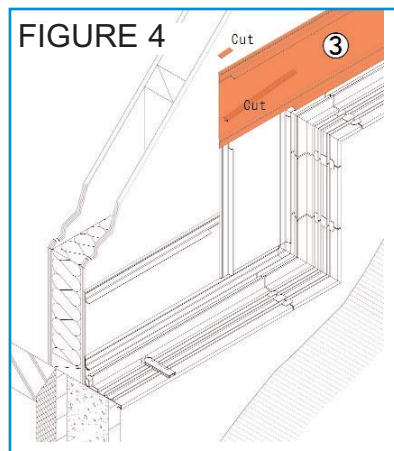
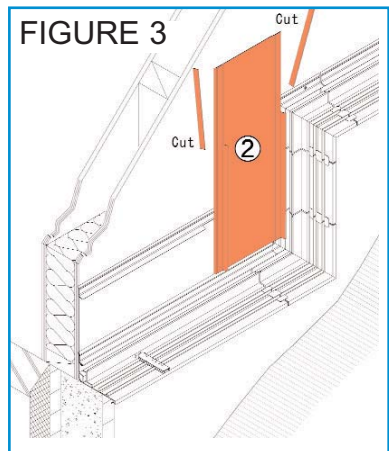
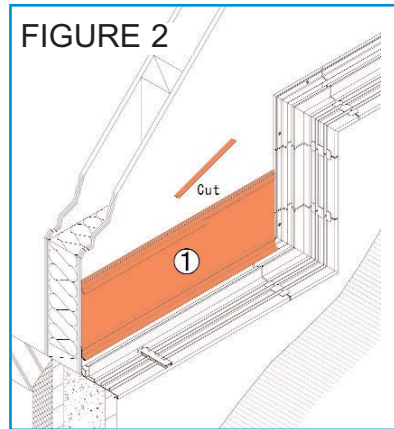
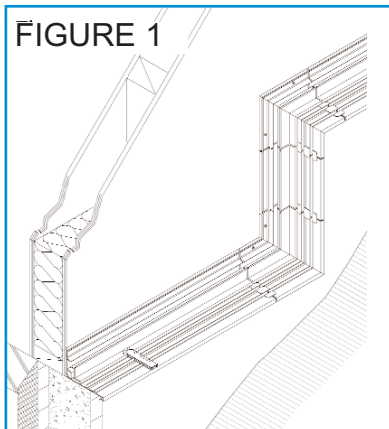
Tools

1. Measuring tape
2. Screw gun
3. Power miter saw and box
4. Brush
5. Handsaw
6. Utility knife
7. Nippers
8. Cutting shears
9. Hammer for deburring
10. Adhesive and applicator (Asphalt or butyl-based calk)

6. Installing at Stepped Foundations

■ Start from the bottom and work up. Measure and dry-fit all step units and body parts for the steps. Once you have determined that everything fits, apply adhesives, install the parts and screw into place. Tape and seal as appropriate (Figure 1).

■ Once this is done, install all the flashing, overlapping the flashing pieces from top to bottom



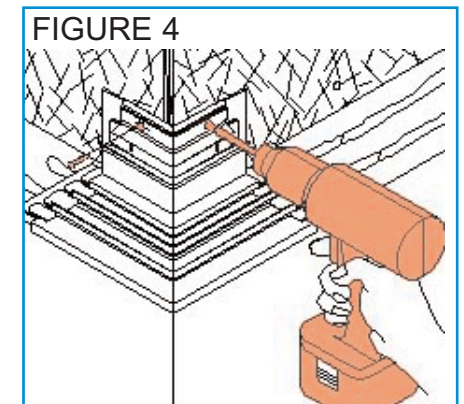
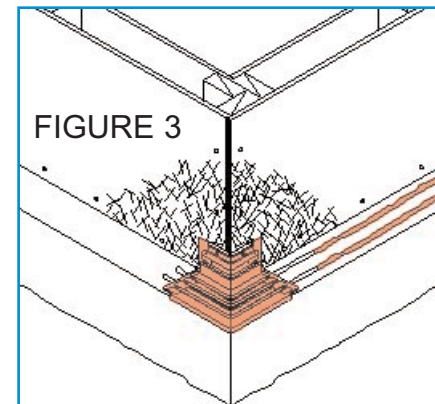
Installation Procedures

1. Preparing the surface

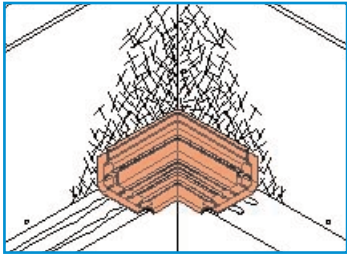
- Make sure the foundation is approximately 4 inches wide
- Remove all dirt and debris from the foundation to ensure proper contact and adhesion
- Remove all bumps and burrs from the concrete to ensure that the surface is uniform and level
- Remove all protrusions on the foundation and wall (nails, screws, etc.)

2. Outside Corner Installation

- Begin by placing the outside corner in the starting position as shown in Figure 3. Screw it in place as shown in Figure 4. Apply 2 lines of adhesive under the corner piece and to the connectors at the edges of the corner piece.
- Do not screw in any other place except where shown in Figure 4
- Hold the corner tightly to the foundation to prevent it from moving or shifting

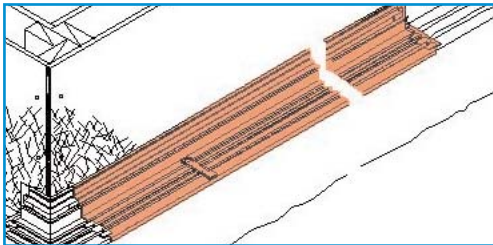


3. Inside Corner Installation



- Dry-fit the inside corner into position as shown in this illustration. Once you've made all measurements, add two lines of adhesive, then secure the inside corner with screws. Also put adhesive on corner connections.

4. Installing the Body

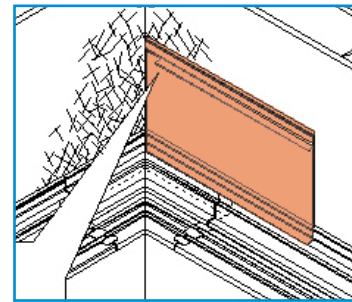


- Insert the body into a quick connect piece on the installed outside corner and fix to the foundation with two parallel, continuous lines of adhesive, following these steps. Also be sure to

put adhesive on the connectors at the edges of the corner piece.

- If the run is shorter than 8 feet, cut to fit
- If the run is longer than 8 feet, cut extra runs to fill in the gap
- Always cut body pieces at 90 degree angles. Do not cut diagonally
- Make sure weep holes are at least 1.5 inches from the end of the body
- Make sure that the distance between weep holes is no more than 33 inches
- Connect the body and corner before placing in final position
- Apply two continuous, parallel lines of recommended adhesive to the foundation
- Fasten the body to sheathing with screws, on each piece, at every joint, and then every 2-3 feet

5. Installing the Flashing





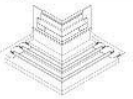


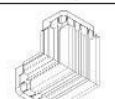

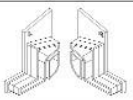


Fit the flashing to the body as follows:

- If the house/building is wrapped, pull up the wrap and install to the sheathing
- Press tightly until you hear the flashing and the body snap together
- Butt pieces of flashing together. Do not overlap one piece of flashing with another
- Stagger the joints of the flashing and the body as much as possible
- Pre-cut and fit flashing around vent and plumbing lines. Once positioned, seal the holes with either tape or sealing compound.
- Screw the flashing into the sheathing, along the grey gasket line located near the top of the flashing, about every 2 feet

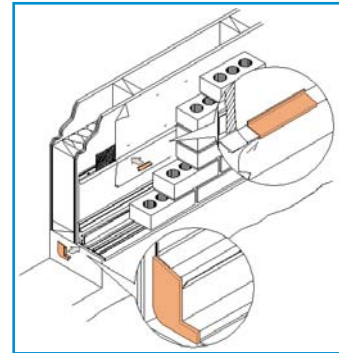
Apply waterproof tape to all joints

- Overlap house wrap onto flashing, attach to mortar blocker fin and secure every three (3) feet with supplied TTF housewrap clips.
- Trim mortar stopper on the joint or the flashing to allow for the width of the waterproof tape
- Tape all vertical joints first (where flashing butts together)
- Tape all horizontal joints next (where the flashing meets the wall or sheathing)

TTF Products

Name	Picture	Color	Size WxHxL	Thickness Mil	Material	Pcs Per Box
Body		Gray	4-1/2"x3"x8'	55	PVC SPVC	6 pcs Per Box
Flashing		Gray	9/16"x8-1/4"x8'	39	PVC SPVC	6 pcs Per Box *In the same box of Body
90deg. Out Corner		Gray	7-3/4"x3"x7-3/4"	55	PVC SPVC	6 pcs Per Bag
90deg. In Corner		Gray	8-3/4"x3"x8-3/4"	55	PVC SPVC	6 pcs Per Bag
Step Out Corner		Gray	6-3/4"x6-3/4"x6-1/2"	55	PVC SPVC	6 pcs Per Bag
Step In Corner		Gray	4-1/2"x4-1/2"x6-1/2"	55	PVC SPVC	6 pcs Per Bag
Quick Connect		Gray	2"x2-7/8"x4-1/8"	59	Elastomer	60 pcs Per Box
End Cap (Right, Left)		Gray	1-2/3"x2"x2/3"	55	Elastomer	60 pcs Per Box
For Windows/Doors						
Window Flashing		Gray	(W) 4-1/8" (H) 3" (L) 4'-4", 5'-4", 6'-4", 7'-4", 8'-4", 9'-4", 10'-4"	55	PVC SPVC	6 pcs Per Box
House Wrap Clip		Gray	(L) 2"	55	PVC	18 pcs per Box *In the same box of Body

7. Installing End Caps & Housewrap Clips

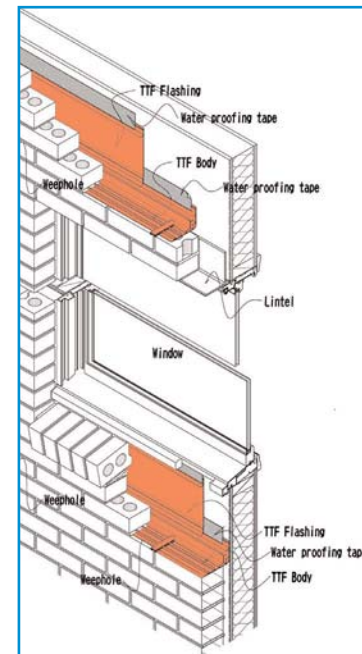


■ All runs of the body should end about 1/4 inch before the edge of the concrete. Apply adhesive to the specially designed end cap and attach to the end of the body.

■ Install supplied housewrap clips approximately every 2 feet to secure the housewrap to the flashing.

FOR BRICKLAYERS

Installing Above a Lintel



■ Install two (2) courses of brick above the lintel and then place the TTF window flashing pan into place. Finish by applying waterproof tape at the horizontal joint of the flashing.

Installing below a Window opening

■ Lay brick up to two courses below the window opening and then install the pan.

■ Apply waterproof tape to the top edge of the window.

■ When possible, apply house wrap to the top of the flashing and seal with waterproof tape.

The pan must extend 2" beyond both sides of the lintel.