

For Concrete
Construction



RETAMATE – Film-Type Concrete Retarder for Surface Joints

Victory Bear eliminates the need for sandblasting with Retamate—the easiest and most flexible way to treat concrete surface joints!

Retamate is a film-type retarder for concrete made of PET film and coated with a polyester-based material. When Retamate contacts an unhardened concrete surface, it inhibits its hardening, allowing it to be washed off with pressurized water. The result is a surface with exposed aggregate that is perfect for concrete joints.

Features & Benefits

Retamate's unique film-based design provides unparalleled ease of use and flexibility.

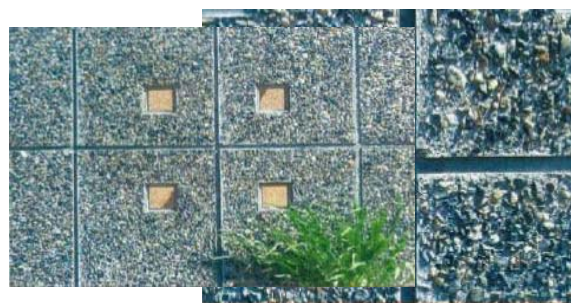
- **Easy to Use** – Retamate is not water-soluble, unlike conventional spray retarders. This makes it much easier to apply to vertical, slanting, and bottom surfaces.
- **Consistent Results** – Retamate provides a uniform retarding effect and depth of etch. This eliminates the struggle and guesswork of achieving uniform results with conventional retarders.
- **Greater Control** – Because it is a film, Retamate allows the contractor greater control of the retarding surface. Its retarding effects do not bleed beyond the desired area.
- **Greater Freedom** – Most conventional retarders must be removed within 12 to 24 hours. Retamate can remain in place for up to two weeks after the pour. This allows greater freedom in construction scheduling for the contractor.
- **Weather-Resistant** – Unlike spray retarders, Retamate will not wash away in the rain before the pour, eliminating the need to reapply on jobsites that experience inclement weather.



No job too big: Retamate was approved by the USDOT for use on the joints of the U. S. 93 Hoover Dam Bypass project.



Retamate was used to prepare a concrete joint.



Retamate can also be used to create decorative exposed aggregate surfaces.

Fukuvi USA, Inc.
Victory Bear Products
7631 Progress Court
CenterPoint 70 Commerce Park
Huber Heights, OH 45424

www.fukuvi-usa.com
www.victorybear.com

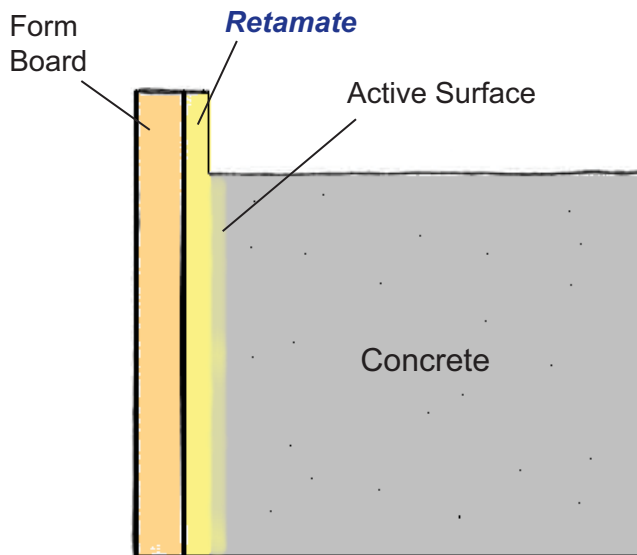
Customer Support
(937) 236-7288 ext. 247/231
aheskett@fukuvi-usa.com
jdresel@fukuvi-usa.com
Fax: (937) 236-7289

For Concrete Construction

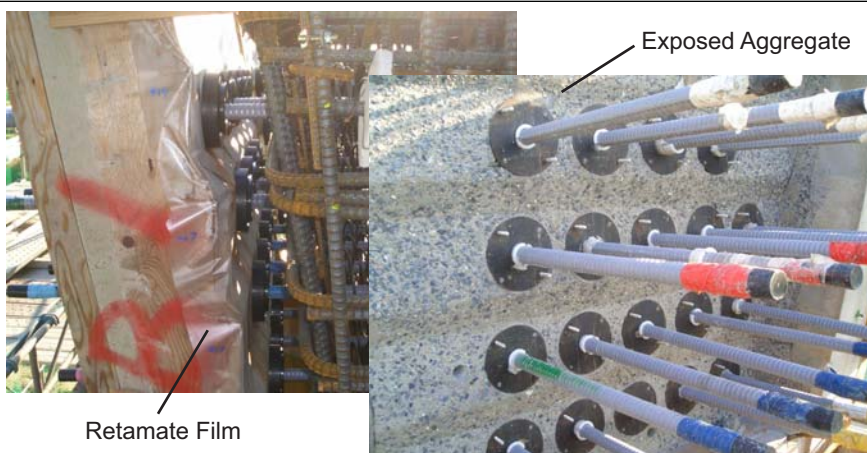


RETAMATE – Film-Type Concrete Retarder for Concrete Joints

Easy to Use



Retamate's film construction allows superior control over conventional methods. You can apply it to the surfaces you want with no bleeding into unwanted areas. You can even leave the form boards in place for up to two weeks after the pour, allowing you greater freedom of scheduling. When you're ready, simply remove the forms and wash away the concrete!



Retamate applied to the form board, then removed to show resulting exposed aggregate surface.

Specifications

U/M: Roll

Width: 1 m (3.28 ft.)

Length: 50 m (164.04 ft.)

Area: 50 sq. m (538 sq. ft.)

Fukuvi USA, Inc.
Victory Bear Products
 7631 Progress Court
 CenterPoint 70 Commerce Park
 Huber Heights, OH 45424

www.fukuvi-usa.com
www.victorybear.com

Customer Support
 (937) 236-7288 ext. 247/231
aheskett@fukuvi-usa.com
jdreisel@fukuvi-usa.com
 Fax: (937) 236-7289