

For Precast
& Tilt-up
Construction

45° MITER CORNER SYSTEM

SAVE MONEY on your next project with VICTORY BEAR!

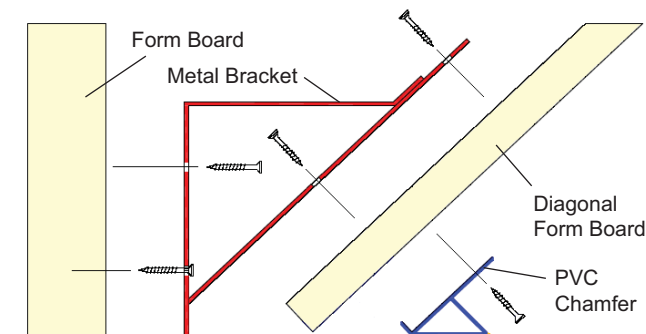
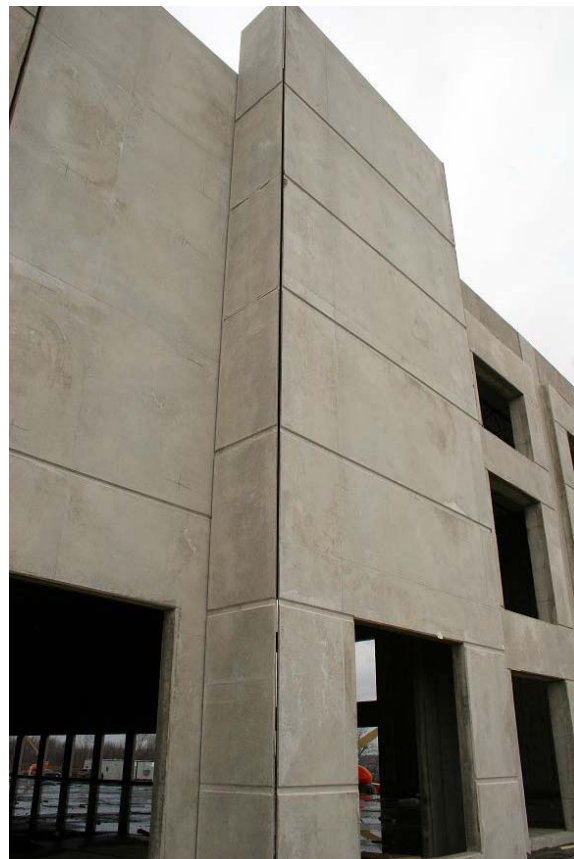
Victory Bear is an innovative concrete product supplier with deep roots in the tilt-up, precast, and cast-in-place industries. We offer the most complete line of precast and tilt-up profiles in the industry.

Victory Bear is proud to introduce the new 45° Miter Corner System! This new system makes it simple and easy to create attractive miter panels. There is no longer a need for complex and expensive professional woodwork. Our simple bracket-and-chamfer system saves time and money--and creates the desired look every time!

Features & Benefits

Victory Bear's Miter Corner System gives you **added value** with these features:

- **Superior Design!** – Our Miter Corner System uses a series of sturdy, reusable steel brackets and a PVC chamfer for the value, ease of use, and finish you have come to expect from Victory Bear.
- **Save Time and Money** – The Miter Corner System installs in just a few simple steps, saving time, labor, and material costs! It's so simple, anyone can install!
- **100% PVC Reduces Costs** – PVC virtually eliminates concrete pitting caused by wood-wicking. It also eliminates discoloration caused by wood sugars. It almost entirely eliminates the need for grinding and patching, **saving you man-hours and subcontractor expenses.**
- **Patented "Flex Edge Seal"** Our patented Flex Edge Seal fits tightly against the casting surface, preventing concrete seepage while creating sharp, crisp lines.



Victory Bear's Miter Corner System is easy to install. Simply fasten the brackets and chamfer piece to the form boards.

Fukuvi USA, Inc.
Victory Bear Products
7631 Progress Court
CenterPoint 70 Commerce Park
Huber Heights, OH 45424

www.fukuvi-usa.com
www.victorybear.com



MADE IN USA

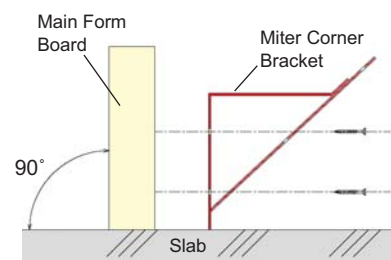
Customer Support
(937) 236-7288 ext. 247/231
aheskett@fukuvi-usa.com
jdresel@fukuvi-usa.com
Fax: (937) 236-7289

For Precast
& Tilt-up
Construction

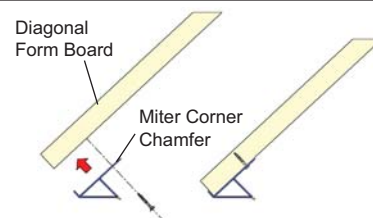
45° MITER CORNER SYSTEM

Installation

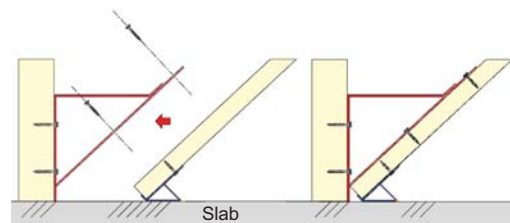
- Step 1** – Make sure the main form board is as close to 90° as possible. Attach the metal bracket to the main form board every 12" if using a 3/4" diagonal form board, or every 16" if using 1.5" diagonal form board*.



- Step 2** – Fasten the Miter Chamfer to the diagonal form board.



- Step 3** – Set the form board in place, making sure the bottom edge of the form and chamfer fit tightly against the slab and the Miter Corner bracket. Fasten the bracket to the diagonal form board.



*Spacing of brackets may vary depending on desired panel thickness and type of diagonal form board used. Consult the product manual or Victory Bear for details.

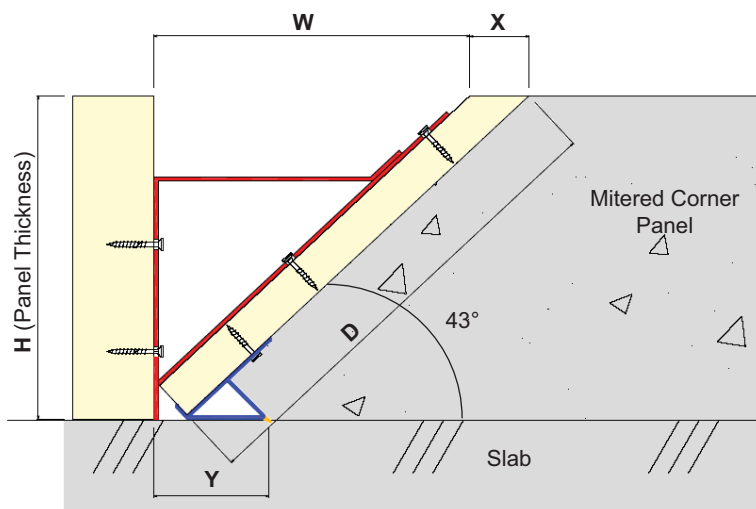


Assembled Miter Corner Brackets and Chamfer

MITER CORNER CHAMFER SPECIFICATIONS

Length: 8 ft.

Coefficient of Linear Expansion:
0.0132 inches per degree F



Height (H) Nominal / Actual	Width (W)	Diagonal (D)	3/4" Plywood Diagonal Form Board		2-By Diagonal Form Board	
			X	Y	X	Y
6.0" / 6.0"	5.869"	8.686"				
8.0" / 7.25"	7.21"	10.519"	1.10"	2.135"	2.20"	3.234"
10.0" / 9.25"	9.355"	13.452"				
12.0" / 11.25"	10.993"	16.384"				

Fukuvi USA, Inc.
Victory Bear Products
7631 Progress Court
CenterPoint 70 Commerce Park
Huber Heights, OH 45424

www.fukuvi-usa.com
www.victorybear.com



MADE IN USA

Customer Support
(937) 236-7288 ext. 247/231
aheskett@fukuvi-usa.com
jdresel@fukuvi-usa.com
Fax: (937) 236-7289